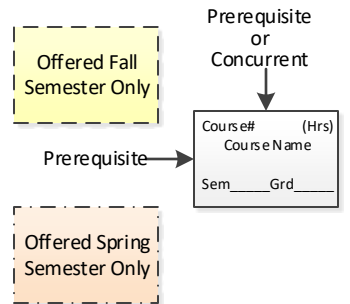
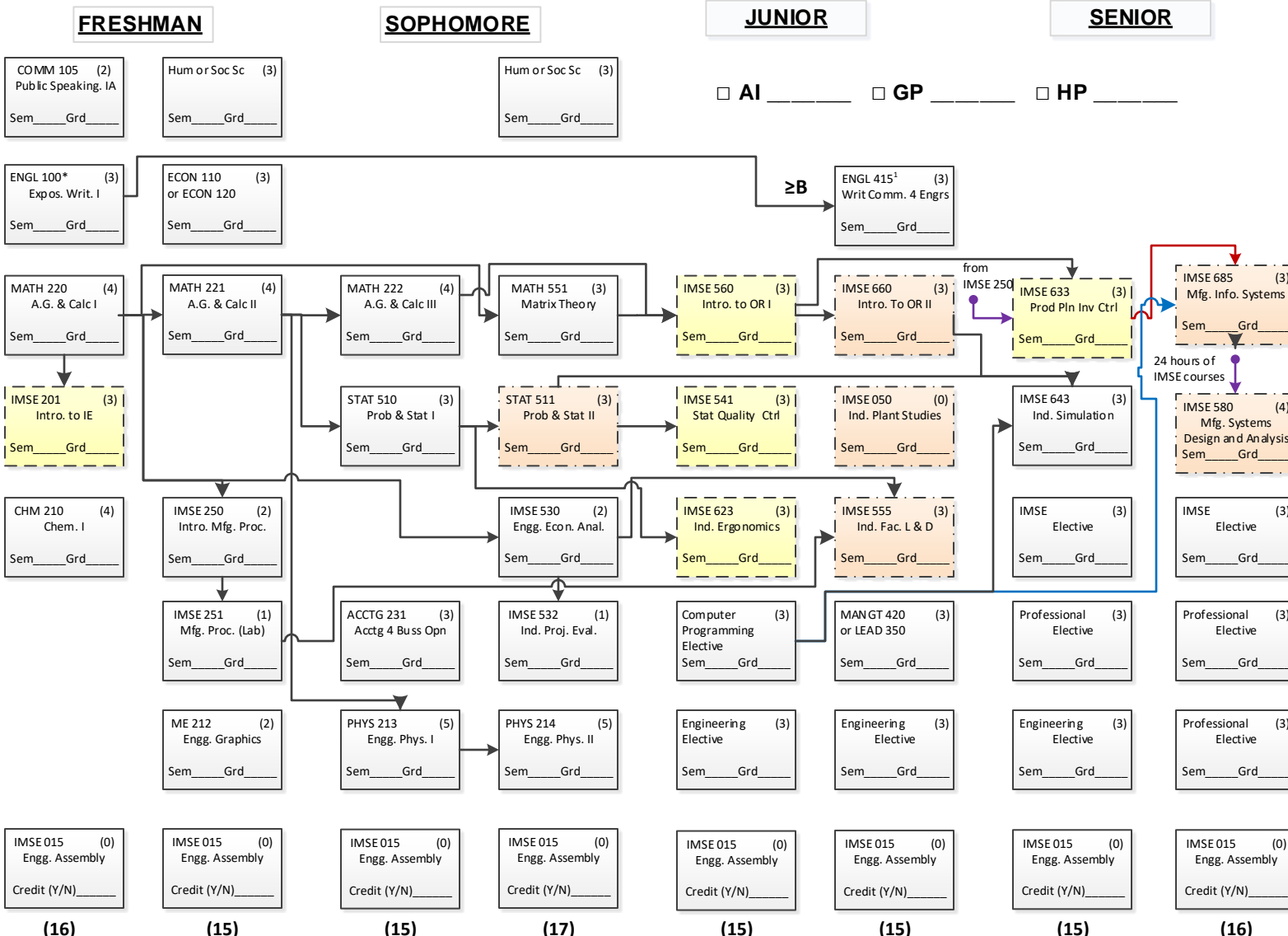


Date of first entry: _____ Expected Graduation: _____ Advisor: _____



IMSE Electives: The IMSE electives must be selected from the IMSE department. Each class must also be at least 3 credit hours.

Substitutions: IMSE 501 or LEAD 350 can substitute for MANGT 420; IMSE 591 and IMSE 592 can substitute for IMSE 580. Conc. or prereq. requirement for IMSE 591 or 580 is 24 credit hours of IMSE courses of 500 level or above.

K-State 8: The courses required for a BSIE degree satisfy five of the K-State 8 areas. The student must fulfill the aesthetic interpretation (AI), global perspectives (GP), and historical perspective (HP) tags. Most students will fill these tags with their humanities, social science or professional electives.

IMSE Assembly Requirement: Each semester a student must enroll in IMSE 015 unless he/she is a concurrent B.S./M.S.I.E. student, in which case he/she must enroll in either IMSE 015 or IMSE 892.

IMSE Graduation Criterion: At most 6 credit hours of IMSE 500+ courses that earned a D may be applied to a student's B.S.I.E. graduation requirements.

IMSE Course Retake Criterion: Any IMSE course being taken for the third time in any five-year period may not be used to fulfill a student's B.S.I.E. graduation requirements.

¹Prerequisite for ENGL 415 is a "B" or better in ENGL 100. ENGL 200 must be taken if ENGL 100's grade ≤ "C".

Total hours required for graduation: 124

Computer Programming Elective: The computer programming elective consists of 3 hours taken from CIS 200, CIS 209 or ME 400.

Engineering Electives: The 9 hours of basic engineering credit may not include more than 6 hours from a single department and the 9 hours must be selected from the following courses. Note, a student planning to take the FE exam is advised to take their 9 hours from classes with an *. BAE 345; CE 333, 530* (at most one of 333 and 530) and 533; CHE 350, 354*, 355*, 356*, 520, and 521; ECE 410, 511, 519* and 571; ME 512*, 513*, and 571; IMSE 562.

Professional Electives: The 9 hours of professional electives are designed so that the student may specialize in an area of interest. Any of the following classes may count toward the professional elective requirement. Any IMSE class; any engineering, Physics, Chemistry, Biochemistry, Biology, Geology, Kinesiology above 300; and CIS class above 200; MATH 240 and any Mathematics class above 500 except MATH 570 and 591; any Statistics class above 500 except STAT 702, 703, 706 and 710; BIO 198, 201; CHEM 230; FINAN 450, 510, 520, 643, 654; ACCTG 241, 331, 342, 433; ECON 510, 520, 530, 540; AGECE 680, 750;